



G Series

LED Area and Roadway Fixture

Project:
QTY:
Email:
Phone:

Overview:

The **G Series** gives you unlimited customization in the slimmest platform available in the market.

Highlights:

- ETL, DLC, IP65, and NEC Compliant.
- 5 year warranty.
- Instantly save up to 70% on energy bills by replacing older lighting technology
- Sold with 7-pin NEMA Receptor w/ Photocell or no receptor for non-sensor installations
- Wide variety of mounting options, color temperatures, wattages, distribution types, and finishes makes this fixture an all-in-one universal solution for area lighting



Chip Parameters	
Watt Usage:	60~300 watts
Color Temp:	3000K-5700K
CRI:	>70
Efficacy:	130±10% lm/watt
Lifetime:	L70>50,000 hours
Driver Parameters	
Input Voltage:	120V~277V 50/60Hz
Power Factor:	90%
Application	
Roadways, Parking Lots, Area Lighting	

Characteristics	
Certifications:	ETL, DLC, IP65, IDA under 3000K CCT at 90° angle
Warranty:	5 year limited warranty
Housing Parameters	
Operating Temp. Range:	-40°F to 104°F
Operational Humidity Range:	95%Rh or below
Housing:	ADC12 Aluminum Alloy
Lens:	High transmittance polycarbonate
IP rating:	IP65 - complete ingress protection against dust and high pressure water spraying

Wattage	Lumen/Watt	Total Lumen Output	Replaces	Warranty	Product Dimension/Weight (in. and lbs)	Box Dimension / Weight (in. and lbs)
60W	130 lm/w	7,800 lm	390W Incandescent/225W HID	5 yrs	8.27 lbs	21.2 x 15 x 7 / 10 lbs
80W	130 lm/w	10,400 lm	520W Incandescent/300W HID	5 yrs		
100W	130 lm/w	13,000 lm	650W Incandescent/375W HID	5 yrs		
120W	130 lm/w	15,600 lm	780W Incandescent/445W HID	5 yrs		
150W	130 lm/w	19,500 lm	975W Incandescent/560W HID	5 yrs	17.24 x 12.2 x 2.83 / 10.58 lbs	26.5 x 14.8 x 6.6 / 12.76 lbs
200W	130 lm/w	26,000 lm	1300W Incandescent/750W HID	5 yrs		
250W	130 lm/w	32,500 lm	1625W Incandescent/930W HID	5 yrs	16 lbs	32.3 x 15.7 x 7.48 / 19.4 lbs
300W	130 lm/w	39,000 lm	1950W Incandescent/1115W HID	5 yrs		

ORDERING

Example Order Code: 1-ST-G200-50K-A-S-T3-BR

Your Order Code:

Series	Watt		Color Temp.	Mounting Type	Sensor	Distribution		Finish
1-ST-G	60	150	30K	A	S Photocell Sensor (Dusk-To-Dawn)	T1	T5 Type 5	WH
	60 watt	150 watt	3000K	Slip Fitter		T2		White
	80	200	40K	B Adjustable Square Pole/Wall	NS No Sensor	T3	BR	
	80 watt	200 watt	4000K			Type 2	Bronze	
	100	250	50K	C Square Pole/Wall		T4	SL	
	100 watt	250 watt	5000K			Type 3	Silver	
120	300	57K		T5	CU			
120 watt	300 watt	5700K		Type 4	Custom			

Mounting Options



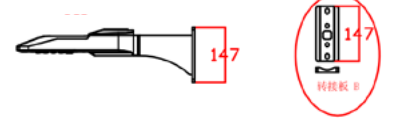
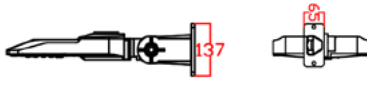
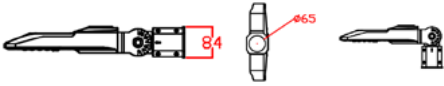
A - Slip Fitter
Mounts to 1.5" ~ 3" poles.
Adjustable angle.



B - Adjustable Wall Mount
Mounts to walls or square poles.
Adjustable angle.



C - Direct Pole/Wall Mount
Mount to walls or square poles.



Certifications



ETL Listed Product is certified by one of the world's most difficult quality control laboratories indicating superior performance and longevity.



5 Year Warranty We believe in our product quality and offer the warranty to prove it. Unlimited lifetime support is also included, call us anytime.



IP65 Rated Maximum protection against dust and water. Withstands all weather types with silicone sealed gaskets and tight manufacturing tolerances.



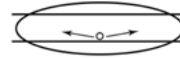
DLC Certified Product has been approved by a DLC laboratory conforming to their strict performance and energy efficiency standards.

Distribution Types

TYPE I



TYPE II



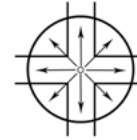
TYPE III



TYPE IV



TYPE V



TYPE VS

